



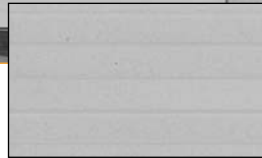
Panelmasta® Contemporary™

Residential Sectional Garage Door

PRODUCT CODE
PMT1CO



Panelmasta® Contemporary™ style



Panelmasta® Contemporary™ profile

Description:

Steel sectional overhead garage door with two fine lines (ribs) across each panel and is designed to offer a very subdued, contemporary appearance for the modern home.

The sectional garage door is made up of a number of rigid sections that are hinged together and move vertically in the opening, then horizontally along the ceiling, guided by tracks and counterbalanced with springs.

Profile:

| Tongue & Groove Profile | |
|----------------------------|-----------------------------|
| PANEL PROFILE | |
| PATTERN OR RIB TYPE | |
| MODEL | CSI Panelmasta Contemporary |
| MODEL CODE | PMT1CO |
| COIL THICKNESS | 0.6mm |
| COIL TYPE | G2NS |
| WOODGRAIN OPTION | Yes |
| MAX DOOR HEIGHT | 3050mm |
| MAX DOOR WIDTH | 7100mm |
| TAPER OPTION | Hinged or Fixed Taper |
| HIGH WIND OPTION | No |

Size range:

Available in sizes from 1485mm to 3050mm in height and from 1751mm to 7100mm in width.

Note:

Spacings between ribs are varied to give an even spread across the height of the panel.

Features:

- "Tongue & groove edge" panel profile.
- Heavy duty galvanised steel hinges.
- Range of sizes - doors are each assembled from a range of standard height panels.
- Hi-tensile, box section door stiles bonded with adhesive to the door panel, minimising the transmission of sound.
- Nylon wheels for smoother, more durable operation.
- Reinforcing for wide doors -
 - 3500 to 4150mm - 1 top panel only
 - 4155 to 5000mm - 2 (on 4 panel doors);
3 (on 5 panel doors)
 - 5005 to 5450mm - 3 (on 4 panel doors);
4 (on 5 panel doors)
 - 5455 to 7100mm - 4 (on 4 panel doors);
5 (on 5 panel doors)
- Doors from 5290mm wide have double end stiles.

Colours/Finishes:

Available in -

- More than 19 colours
(See brochure for details).
- COLORGRAIN® Designer steel finish - a timber look finish.
- Available in Sarawak Red & Cedar.
- Smooth or woodgrain embossed finish.





Panelmasta® Contemporary™

Residential Sectional Garage Door

PRODUCT CODE
PMT1CO

Options:

- Tapers - for garage floors that slope across the opening.



Installation Requirements:

INSTALLATION CLEARANCES

| HEIGHT | WIDTH | HEADROOM (mm) | | | | | | SIDEROOM (mm)* | | |
|---------|---------|---------------|------------|-------------|------------|-------------|---------|-------------------|-------------|------------|
| | | Recommended | | Restricted | | With Opener | | minimum each side | | |
| | | Std H/Room | | low H/Room | | Std H/R | Low H/R | Std | Low H/Room | |
| | | Up to 5200W | Over 5200W | Up to 2760H | Over 2760H | | | | Up to 2400H | Over 2400H |
| To 3050 | To 7100 | 300 | 300 | 150 | 150 | 375 | 225 | 120 | 135 | 160 |

Note:

Sideroom dimensions include door overlap, of opening, of 30mm on each side.

Recommended backroom clearance requirements:

Rear Torsion - 680mm plus door height.

Standard Headroom - 540mm plus door height.

Standard Headroom with Opener - 1000mm plus door height.

STANDARD SIZE RANGE AND SET PANEL HEIGHT

| Standard Size | | Panel Stack mm | | | | |
|---------------|----------------|----------------|-----------|-----------|-----------|-----------|
| Door Width mm | Door Height mm | Bottom Panel | 2nd Panel | 3rd Panel | 4th Panel | 5th Panel |
| 2450 | 2135 | 533 | 533 | 533 | 533 | nil |
| 2750 | 2210 | 533 | 533 | 533 | 610 | nil |
| 3050 | 2285 | 610 | 533 | 533 | 610 | nil |
| 4880 | 2440 | 610 | 610 | 610 | 610 | nil |
| 5150 | | | | | | |
| 5450 | | | | | | |

Notes / Information

- Note: For areas within one kilometre of a corrosive environment eg. Salt air or industrial fallout, special care and maintenance are generally required for metal products. Consult B&D or your B&D Dealer for advice.
- CSI Panelmasta® and Slimmasta® garage doors, in normal residential use are covered by a 1 year warranty for all components and labour conditional on care and servicing as recommended in the door's handbook. Full details of the warranty are available, on request, from your nearest B&D office.
- The company reserves the right to make changes or improvements to the products or accessories without notice and without incurring any obligation to make similar changes or improvements to goods previously ordered.
- B&D "Prefixed Trademarks" are trademarks of B&D Australia Pty. Ltd. Abuse of these trademarks will result in legal action.
- COLORBOND is a registered trademark of BHP Steel (JLA) Pty Ltd.
- B&D products have many patents and registered designs applicable.
- While BHP is our preferred supplier, steel products from other sources may also be used.
- The process of roll forming sheet steel may cause irregularities in flat panel surfaces. Woodgrain texture improves the doors aesthetics. Flat finishes not available for all sizes.
- Details correct at date of publication. Specifications subject to change without notice.

NOTE:

While BHP Steel is our preferred supplier, steel products from other sources may also be used.

COLORGRAIN® and COLORBOND® are registered trademarks of BHP Steel Limited. BHP is a trademark of BHP Billiton Limited under licence by BHP Steel Limited, an unrelated corporation."

Trademarks registered to B&D Australia Pty. Ltd. ABN 25 010 473 971. Unless otherwise stated, B&D Doors are Australian made. The company reserves the right to make changes or improvements to the products and accessories without notice and without incurring any obligation to make similar changes or improvements to goods previously ordered.

